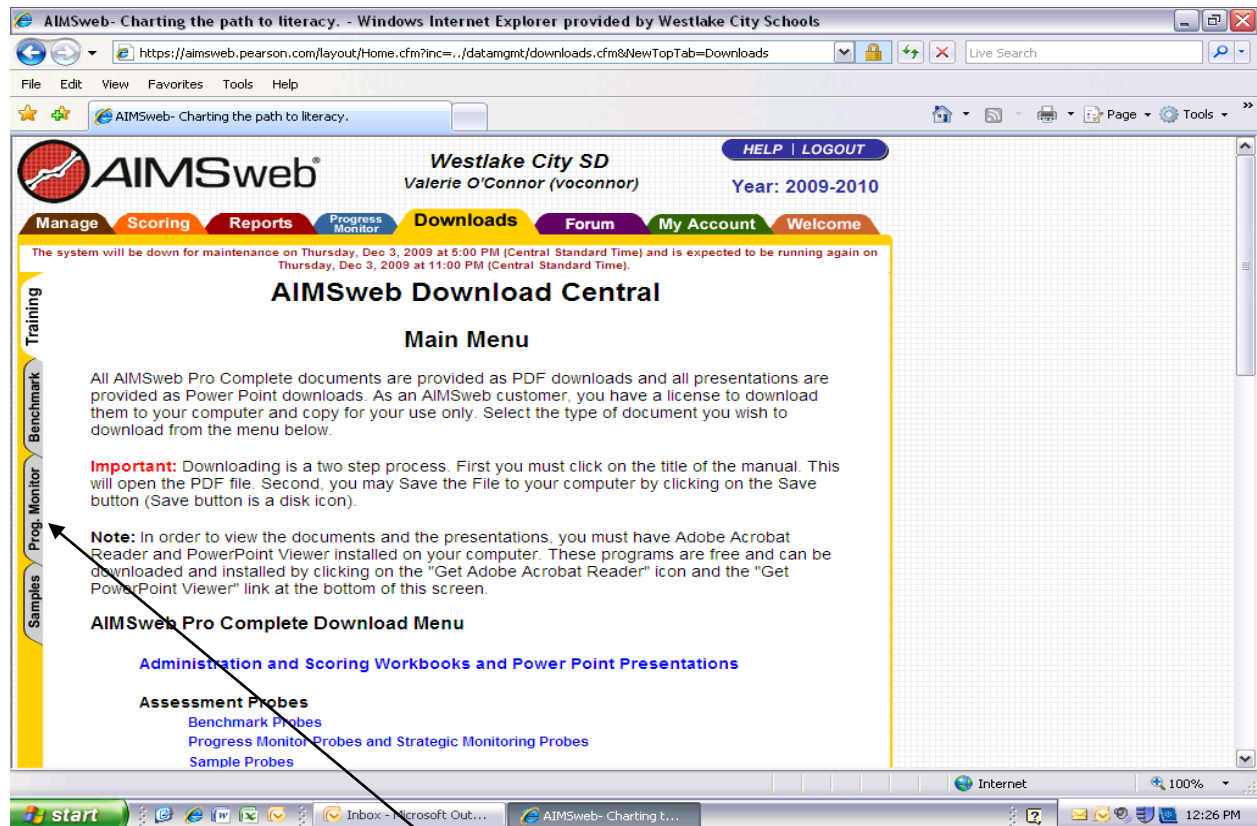
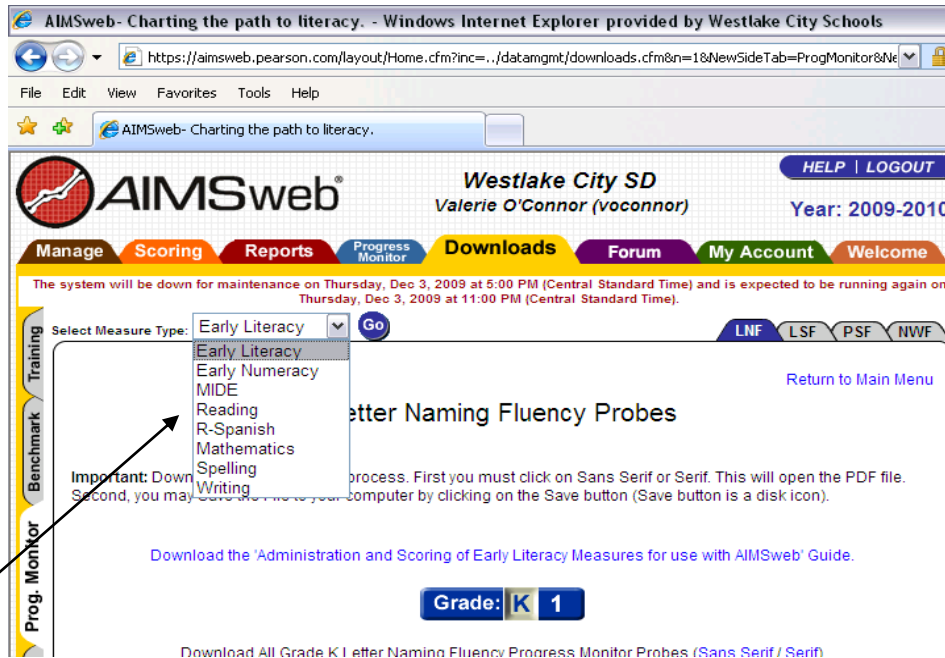



Downloading Progress Monitoring Probes



1. Go to the Download Tab
2. Click on the Progress Monitoring Tab.

Downloading Progress Monitoring Probes



3. Click on the area you want to assess and PRESS 
 - a. Benchmark Probes used
 - i. 1st grade
 1. Early Literacy
 2. Early Numeracy
 3. Reading (R-CBM)
 - ii. 2-4 grade
 1. Reading (R-CBM, MAZE)
 2. Math (MCAP, MCBM)
 - iii. 7-8 grade
 1. Reading (R-CBM, MAZE)
 2. Math (MCAP, MCBM)
 - b. Click on the appropriate grade level and probe you wish to use
 - i. There is no rhyme or reason for choosing probe numbers.
 - ii. Most teachers are just going in order to keep track.
4. Print off the probe and make copies.
 - a. MAKE SURE YOU MAKE COPIES AND GIVE OUT THE STUDENT COPIES
 - b. The answer sheets are printed out with the probes.